



"Nurungi"

Remembered

OFFICIAL NEWSLETTER OF THE CONCORD HERITAGE SOCIETY

email: chs@concordheritage.asn.au

www.concordheritage.asn.au

EDITOR

No. 82

December 2002

PRESIDENT
Ms. TRISH HARRINGTON
9764-3296

PUBLIC RELATIONS
Mrs. TRISH SKEHAN
9743-4172

SECRETARY
Mrs. LOIS MICHEL
3 Flavelle Street
(P.O. Box 152)
Concord 2137
Phone: 9744-8528
Fax: 9744-7591

*

MEETINGS

General Meetings

2nd Wednesday of month
at 7:30 pm in the
Concord Citizens' Centre
(except July)

Executive Meetings

4th Wednesday of month
at 7:45 pm in the
Concord Citizens' Centre

Committee Meetings

As arranged
Contact Chairpersons
for details

Museum

Fred Stansfield, 9743-1866

Walker Estates

First Thursday each month
(please contact to confirm)
Concord Bowling Club
Clermont Ave, North Strathfield
Errol Grace, 9743-4301

Heritage

Bill Barlow, 9743-3662

Oral History

Lola Sharp, 8753-0659

*

**CONCORD
HERITAGE MUSEUM**
5 Wellbank Street

Open 2:00 - 4:00 pm
Wednesday & Saturday



Have you booked yet?

CHRISTMAS BARBECUE

Wednesday, 11th December - Rhodes/Rotary Park

There will be no general meeting in December, in its place we will be enjoying our annual Christmas Barbecue.

We will be gathering there from 5:30 p.m. (food served at 6:30) to enjoy a good meal, good fellowship and good location so come along and join in. The evening will conclude at approximately 8:00 p.m.

Visitors are welcome so feel free to invite

friends and neighbours..

Cost will be \$10 per head (children free). All food will be provided, but BYO liquid refreshments. We will provide paper plates and plastic cutlery, but bring your own glasses

For catering purposes it is essential to book, so please contact the secretary on 9744-8528 with numbers by 4th December



Master Illuminator.

The guest speaker at our November meeting was Mr Geoffrey Ford, master scribe and illuminator, who gave a most interesting and informative talk. With a wonderful 'hands on' display of rare and precious examples of his work, Geoff kept us enthralled with stories.

Geoff was amazed at our special "Illuminated Address", presented to Dame Eadith Walker on the opening of the Thomas Walker Convalescent Hospital in 1893. Describing the piece as 'priceless', Mr Ford explained that illuminated addresses have burnished gold or silver added. Illustrated addresses only have colour, not precious metals, for decoration.

He has worked for the Australian and British governments, producing documents for presentations to Parliament. One example of his work was used by H.M. Queen Elizabeth, for a Sydney event. Unfortunately, the date had been changed, and everyone was informed, except Geoff. He had to do hasty alterations to the vellum with a fine scalpel. Often, four or five complete drafts are made until each detail is perfect.

(continued page 2)

Museum Working Bee

Our Museum will be closed for January. However, there is a lot of work that needs to be done and we hope to hold a couple of working bees during this time.

The main work to be carried out is to clean out the store room, see what needs to be kept and what can be disposed of and re-pack and label items so they can be easily located.

We will also need to clean and dust the displays and possibly re-arrange, depending on what we find in storage.

Would you prefer to help on a weekday or weekend. Please contact Fred Stansfield or Lois Michel if you are willing to help out with this work and we'll set the dates.



Bulletin Board

Wednesday, 11th December -
Annual Christmas Party at
Rhodes Park.

This is the last meeting for 2002.
See Dates for your Diary for 2003
meetings.

Another commission involved re-designing and correcting the Coat of Arms for former Prime Minister Maggie Thatcher.

Geoff pointed out that coats of arms can be changed as long as they follow the exact descriptions laid down by the appropriate office of designs.

Mrs Thatcher was adamant that she wanted a shield, but only males are entitled to this shape. The appropriate design for women is a diamond, so a small silver shield was added as the centrepiece of the design.

Sir Isaac Newton and a Naval Officer flanked each side of the centrepiece. However, as the original uniform was that of a submariner and was not appropriate, Geoff changed this to that of a Naval officer serving in the Falklands war.

Our thanks to Perpetual Trustee staff, who loaned us part of the contents of the TW travelling trunk for display on the night.

His star pupil, Bronwyn Johnston, shown with Geoff holding a draft of the Queen's presentation at Sydney Town Hall. Praising Bronwyn's skill, Geoff said *"The greatest thrill for a teacher is to have a pupil who surpasses him"*.



Guides Needed

We have undertaken a very big job in selecting our next project - the restoration of the historic squash court at Yaralla.

This means more tours for each open day and at least two open days per year.

We are now in desperate need of tour guides for Yaralla grounds and mansion.

Won't you give it a go? It's a great chance to become involved in our efforts.

It's not hard work and can be very rewarding.

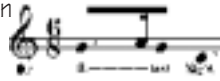
Don't be modest - you CAN do it! Why not give it a try?

Ring the secretary NOW!!

A CHRISTMAS QUIZ

(1) The first instrument on which the carol "Silent Night" was played was:

- A) a harp
- B) a pipe organ
- C) a guitar
- D) a Kazoo



(2) In Australia children put stockings out at Christmas. Their Dutch counterparts use:

- A) old hats
- B) beer mugs
- C) shoes
- D) stockings, just like everyone



(3) Which popular Christmas song was actually written for American Thanksgiving?

- A) Away in a Manger
- B) Frosty the Snowman
- C) Jingle Bells
- D) Joy to the World



(4) In 1647 the English Parliament passed a law that:

- A) made Christmas illegal
- B) recognised Christmas as an official holiday
- C) let prisoners spend Christmas day at home
- D) gave Santa immunity to break-and-enter charges



(5) "Little Jack Horner" in the nursery rhyme may refer to the man who was chief steward to the Abbot of Glastonbury in the early sixteenth century. If so, then the "plum" he pulled from his Christmas pie was actually:

- A) a gem - a gift from the Abbot of Glastonbury for faithful service
- B) 6 golden guineas
- C) an order banishing him from England
- D) A deed to a manor in Glastonbury



Answers can be found on back page.

For more interesting facts visit www.familygames.com/xmasquiz.html

(6) The first commercial Christmas card is generally agreed to have been the one illustrated. The card had a hostile reception from some people because:



- A) It depicted a family, children as well as adults, drinking wine
- B) a mass produced card was felt to be contrary to the Christmas spirit
- C) The ivy leaves surrounding the design were originally a pagan symbol
- D) it was feared that overuse of Christmas cards would lead to a paper shortage.

(7) St. Nicholas is a very hard-working saint, being the patron saint of children, merchants, apothecaries, pawnbrokers, scholars and:

- A) teachers
- B) librarians
- C) mariners
- D) music



(8) The tradition of erecting a tree at Christmas is believed to have started in:

- A) England
- B) France
- C) Germany
- D) Norway



(9) Rudolph the Red Nosed Reindeer made his first appearance in 1939, in a story that was written to:

- A) advertise a new brand of light bulb
- B) be read on a Christmas radio broadcast
- C) entertain the author's sick daughter
- D) promote a department store.



(10) Tom Smith, an English confectioner, invented the Christmas cracker in 1847, drawing his inspiration from packaged French sweets, or *bon-bons*. The original crackers were much like those of today, but the name was different. Smith called his crackers by the French word for:

- A) bangers
- B) hiccups
- C) goblins
- D) Cossacks



Sydney Cove

Sydney Cove these days is known all around the world, not by name, but for the two icons of Australia which guard its entrance: to the west, the giant "coathanger" as an older generation of locals called the Sydney Harbour Bridge; and to the east, the most "wanna see" building on earth, the Sydney Opera House.

At the head of the Cove is Circular Quay, the terminus for Sydney's fleet of commuter ferries and a melee of cruise boats and pleasure craft.

Tourists from all over the world wander the Quay and adjoining Pioneer Park, where they are beset by buskers and an army of touts promoting guided tours to just about anywhere else, including ersatz "sheep stations" and "cuddle a koala" wildlife parks. They'll even sell you a ride on a fake Mississippi paddle-wheeler as part of the authentic Aussie "Down Under" experience.

Before the "Semi-Circular Quay" extensions were completed in 1855, the Tank Stream still flowed into a muddy tidal flat at the head of the cove.

On the eastern side, a couple of windmills graced the ridge while, where the Opera House now stands, oysters still grew on the rocks of Bennelong Point.

On the Western shore, where the tour boats now tie up, there once was the Hospital Wharf, later the Government Docks and Wharf.

North of this was the Convict Commissariat, a large and ramshackle building only demolished in the 1930s to make way for the Maritime Services Building which is now the Museum of Contemporary Art.

Behind that was The Rocks which, through most of the Nineteenth Century, was the haunt of prostitutes, runaway convicts, ships' deserters, and the Irish.

To the south was Sydney Town (it only became a city officially in 1842).

Where the Museum of Sydney now stands was then the (Old) Government House while further round, the Old Sydney Gaol and the original gallows have been replaced - eventually - by the Regent Hotel.

Opposite in High Street (now called George Street) there were sundry dwellings and bond stores, including the home of the Colony's first Post Master, Isaac Nichols

Stop Press.

TRISH SKEHAN is working on her second book, titled "*Eadith: Concord's Royal Kin*". This manuscript features new material, photographs and documents from Britain. It concentrates on the royal connections of Eadith and Thomas Walker.

With stories from oral history tapes by Mrs Joscelyne Verney-Thorne and Lord Elgin, the lineage of the Walkers is traced back through the Stewart Kings to Princess Johanna Stewart who secretly wed John Lyon. A furious father (and King) annulled the marriage, but agreed to let them marry again in front of the assembled court. Consider that the royal bride was already a young widow when she married John.

Murder and mayhem, treason and tragedy form part of this great saga, as we highlight one specific event from each generation.

Tracing the descendants of the Lyon Lords, we come down to Catherine Lyon and John Walker, Thomas' grandparents.

The forgotten maternal side of the family, that of Thomas' mother, Anne Walker, is producing remarkable stories too. Surprisingly, this side of the family has many more royal connections that the ones we already know!

Who is the young baby pictured with Eadith in Yaralla gardens? What happened to him in later life? What connections did H.M. Queen Mary and

Florence Nightingale have with Eadith? Where did I find the photograph of Eadith shooting that Bengal Tiger? You'll be surprised and amazed at the life stories uncovered in this book of memories of Eadith Walker.

Order your copy now at a special price of \$19.95. (RRP is \$21.95.) Only 500 copies are being printed, so don't miss out. This book will include exclusive Walker material finally released from the Mitchell Library's Allen collection.

Call Trish on 0414 434 172 to reserve a copy. Launching at our next Open Day on 30th March 2003.

TERRY ROBINSON is also producing a book tentatively titled "*From Yaralla to Rivendell*". It will feature his fine line drawings of both estates.

Contact Terry or Trish to reserve a copy. This will also be launched on 30th March, 2003.



CONCORD COMMUNITY CAR BOOT SALE 2002

Sunday, 8th December, 2002

9:00 am to 3:00 pm

Greenlees Bowling Club Car Park
(Cnr. Ian Parade & Wellbank Street)

Buying or selling! Don't miss this opportunity.
Plants, toys, gifts, bric-a-brac, lots of treasures.
Great ideas for Christmas

BBQ on site for 1st Concord Scouts

You can book a site for \$10

Details: Trish on 0414-434-172

If you have anything you want to get rid of but don't want to book a stall for yourself, then please donate the goods for the Concord Heritage Society's site. You can drop anything off to Trish or Lois or bring down on the day

Answers to Christmas Quiz

1. C) *Guitar*

The carol was first sung as part of a church service in Oberdorf, Austria. The unusual choice of guitar for the accompaniment rather than the traditional church organ has given rise to a number of picturesque stories (the organ bellows had been damaged by mice; the organ had been sabotaged; etc.), but in fact it was simply a matter of preference on the part of the author, Joseph Mohr.

2. C) *Shoes*

Dutch children set out shoes to receive gifts any time between mid-November and December 5, St. Nicholas' birthday.

3. C) *Jingle Bells*

The song was composed in 1857 by James Pierpont, and was originally called *One Horse Open Sleigh*.

4. A) *Made Christmas Illegal*

Christmas festivities were banned by Puritan leader Oliver Cromwell, who considered feasting and revelry on what was supposed to be a holy day to be immoral. The ban was lifted only when the Puritans lost power in 1660.

5. D) *A deed to a manor in Glastonbury.*

The Abbot of Glastonbury, seeking favour with the king, sent Jack Horner to the palace with the gift of a pie in which had been placed twelve deeds to manor houses. When the King received the pie there were only eleven deeds - the deed to the Manor of Mellis was missing. The Horner family lives in the Manor of Mellis to this day, but they have always denied that the rhyme refers to them.

6. A) *It depicted a family, children as well as adults, drinking wine.*

The card was the brainchild of Sir Henry Cole, a leading cultural light in Victorian England who was later to become director of the Victoria and Albert Museum, among many other

accomplishments. The card was painted by John Calcott Horsley. It depicts a family feast, under which appear the words "A Merry Christmas and a Happy New Year to You". Side panels illustrate Christmas charity - feeding and clothing the poor.

7. C) *Mariners*

St. Nicholas is reputed to be able to calm storms and rescue sailors. Even pirates have claimed his protection. There are almost 400 churches of St. Nicholas in England, more even than churches of St. George, England's patron. As for the other choices in our question: St. John de la Salle protects teachers, St. Lawrence librarians and St. Cecilia is the patron saint of music.

8. C) *Germany*

Christmas trees are known to have been popular in Germany as far back as the sixteenth century. In England they became popular after Queen Victoria's husband Albert, who came from Germany, made a tree part of the celebrations at Windsor Castle. In the United States the earliest known mention of a Christmas Tree is in the diary of a German who settled in Pennsylvania.

9. D) *Promote a department store.*

The story was written by Robert L. May, the advertising editor of the Montgomery Ward department store chain. His four-year-old daughter picked the name Rudolph. May's brother-in-law, Johnny Marks, later turned it into the now-familiar song, which was popularised by singer Gene Autry in 1949.

10. D) *Cossacs*

The snap of the cracker reminded Smith of a cracking whip, and so of the famed Cossack mounted soldiers of Russia. His original crackers, or *cosaques*, contained a sweet and a "love motto". The company he founded exists to this day and supplies Christmas crackers to the British royal family.

From the Secretary's Desk

YARALLA OPEN DAY

We've just received permission for our next Open Day at Yaralla, which will be on Sunday, 30th March, 2003.

Would all our regular volunteers please make a note of the date now so you will be prepared.

To those who haven't taken part before, this would be a good time to give it a try and an opportunity to see our wonderful photographic display. You'll be impressed with what a wonderful day it can be.

PROGRESSIVE DINNER"

Don't forget to mark the date in your diary now - Saturday, 22nd February, 2003.

Full details in the next Nurungi

GROUP TOURS OF YARALLA

Recently we have had enquiries from several groups enquiring about taking them on tours on week days and at week ends and possibly serving morning or afternoon tea to groups from 10 to 50.

CSAHS has given us permission so we need to make plans now.

Would you be able to spare some time to help on these occasions?

If so, please advise the secretary so we can draw up a list of people available and whether they can work weekdays, weekends or both.

WANTED

We desperately need some 4-ring binders. Does anyone know where we can obtain some - cheap?

We are also still looking for a vacuum cleaner in reasonable condition for use at Yaralla.

CALLING ALL VOLUNTEERS

We are still in need of help with photocopying old newspapers - filing correspondence and newspaper clippings, etc., etc.

Just give the secretary a call when you have a free couple of hours.

Our sincere condolences to Graham Ferguson on the loss of his wife Vicky following a long illness.

Dates for your Diary . . .

☛ *Wednesday, 11th December - Our annual Christmas Barbecue at Rhodes Park from 5:30 p.m. Booking essential for catering. Cost \$10 per head, all food supplied. BYO liquid refreshments. Visitors welcome.*

☛ *Executive Committee - will not meet in December - next meeting Thursday, 22nd January, 2003*

☛ *General meeting - there will be no meeting in January - next meeting Wednesday, 12th February, 2003*

☛ *Walker Estates Committee meeting will be on Thursday, 6th February, 2003*

☛ *Progressive Dinner - Saturday, 22nd February*

☛ *Yaralla Open Day - Sunday, 30th March*